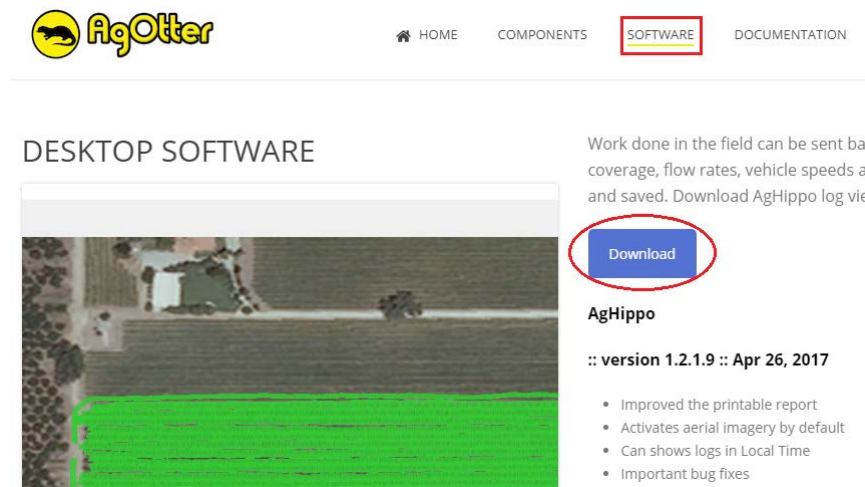
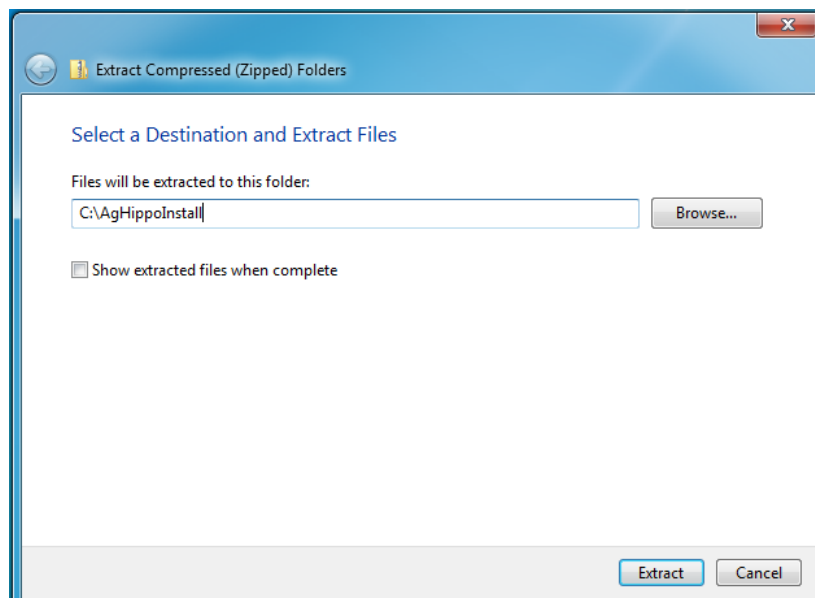
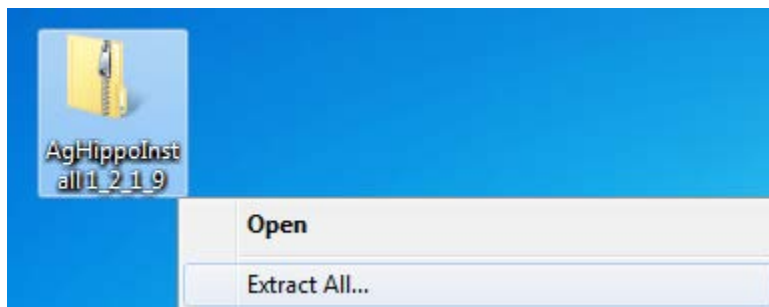


I. AgHippo Installation

1. Download AgHippo from www.agotter.com under the Software link.

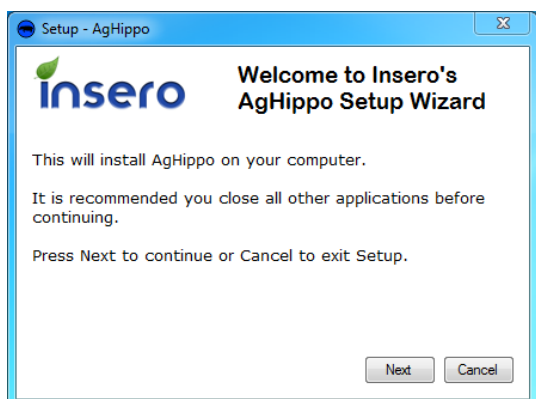


2. Extract the files from the AgHippoInstall zipped file to a new folder. (e.g C:\AgHippoInstall) Right click the file (from downloaded location), select Extract All, choose a folder to extract to – the suggested new folder above, then click the Extract button.



- Run AgHippoInstaller (from the folder in Step 2) and click Next to start the installation.

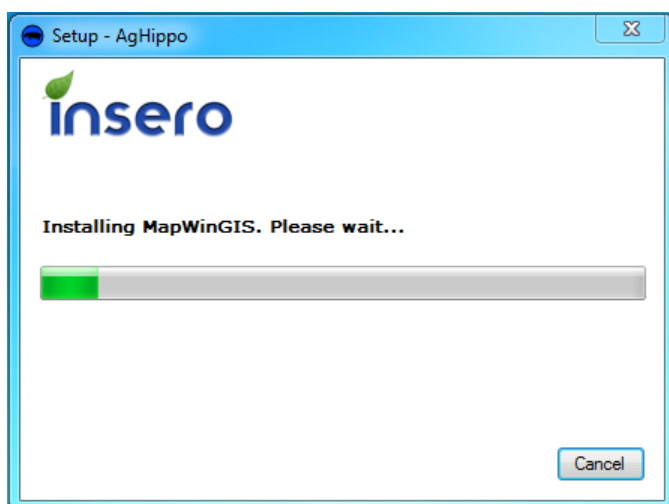
Important Note: If upgrading to a new version of AgHippo, see Appendix A: AgHippo Uninstallation first for uninstallation instructions.



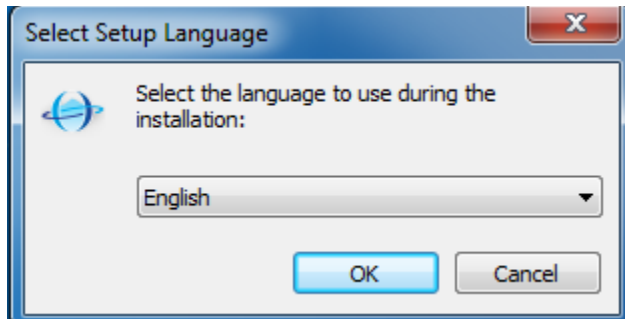
- Click "I accept the agreement" and click Next.



- MapWinGIS is the first component that will install.



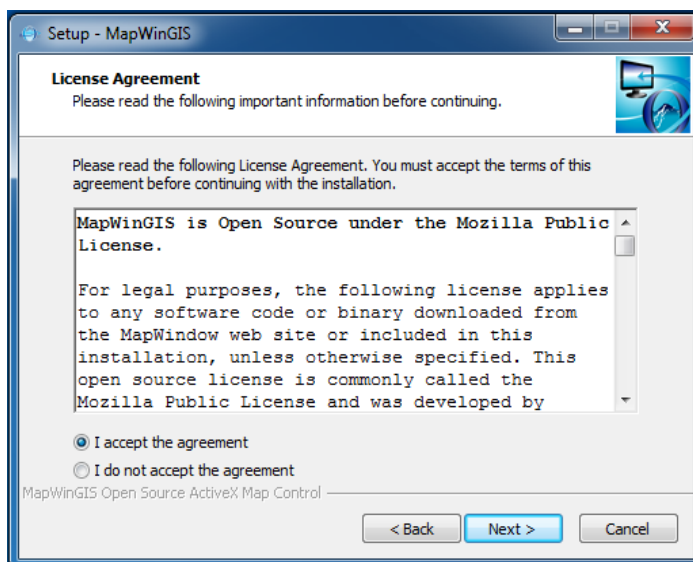
6. Choose English as the setup Language and click OK.



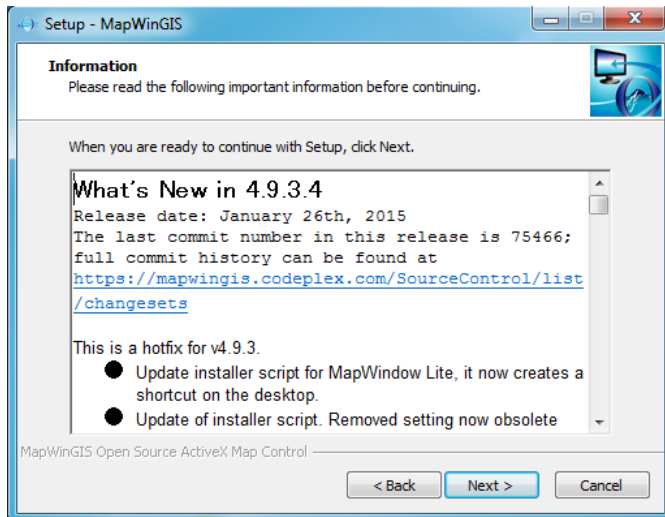
7. Click Next.



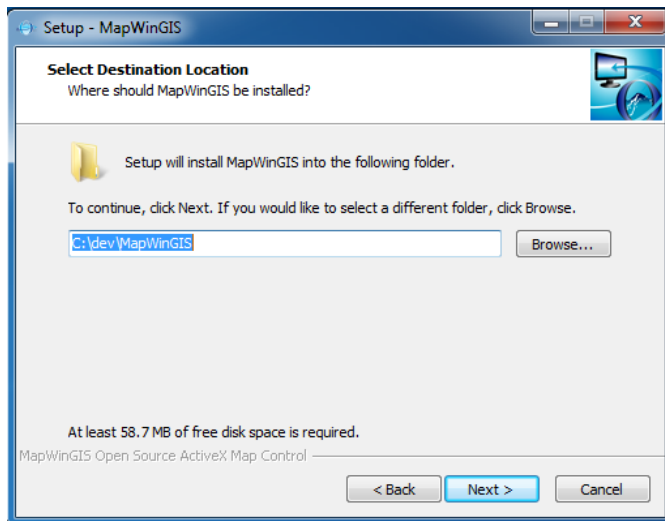
8. Click "I accept the agreement" and click Next.



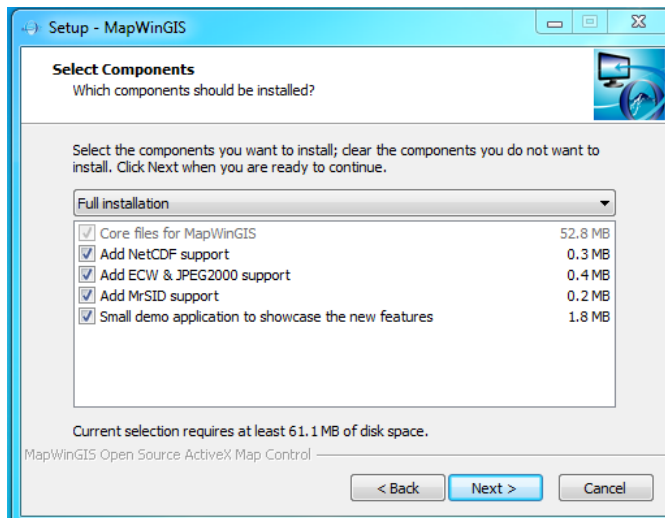
9. Click Next again.



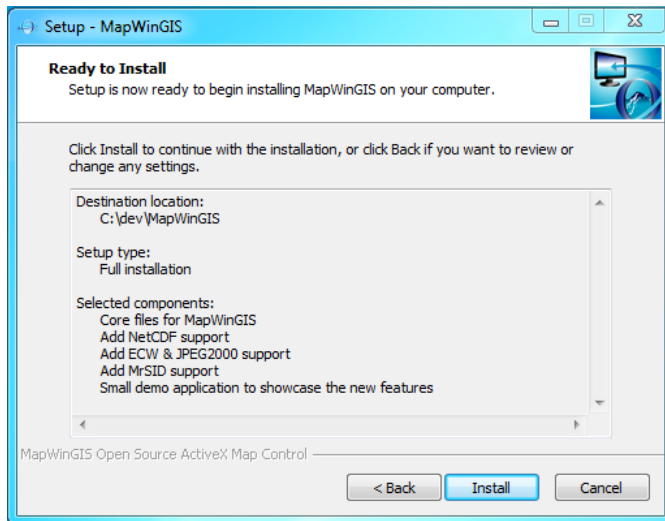
10. On the Destination Location screen, you can specify a folder to install to, or install in the recommended folder. (Choose to create it if it doesn't exist) Click Next once you have selected the folder to install to.



11. Leave the checkboxes marked for the components to be installed, then click Next.



12. Click Install.

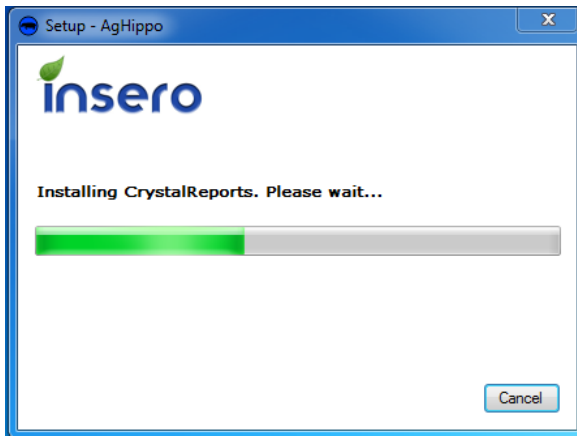


13. At the end of the installation, uncheck all of the boxes and click Finish.

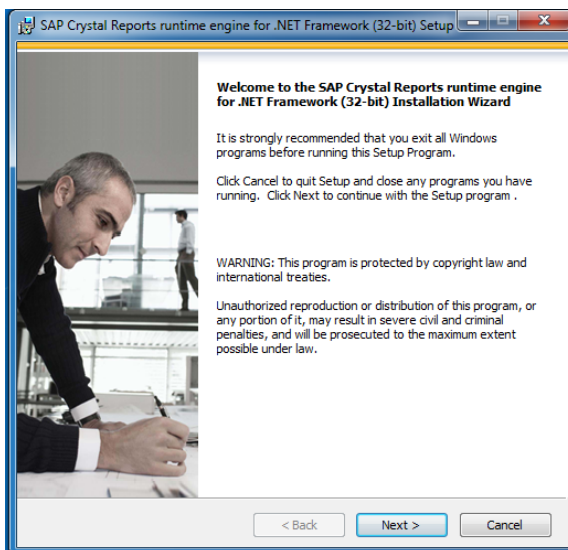


Important Note: If you do not uncheck these boxes, you will open some unnecessary files that will need to be closed.

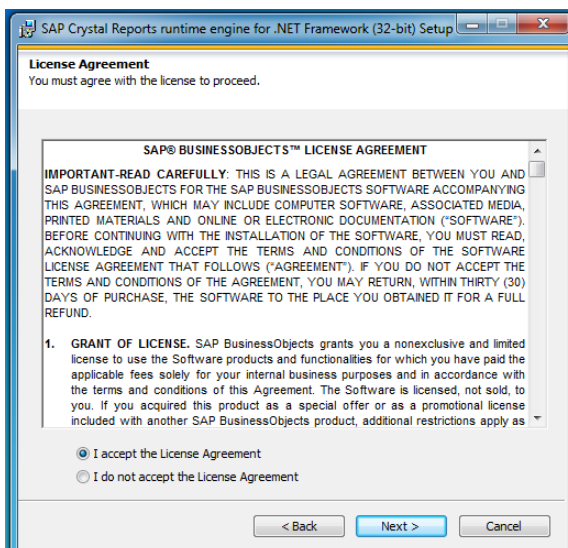
14. Crystal Reports is the second component that will install.



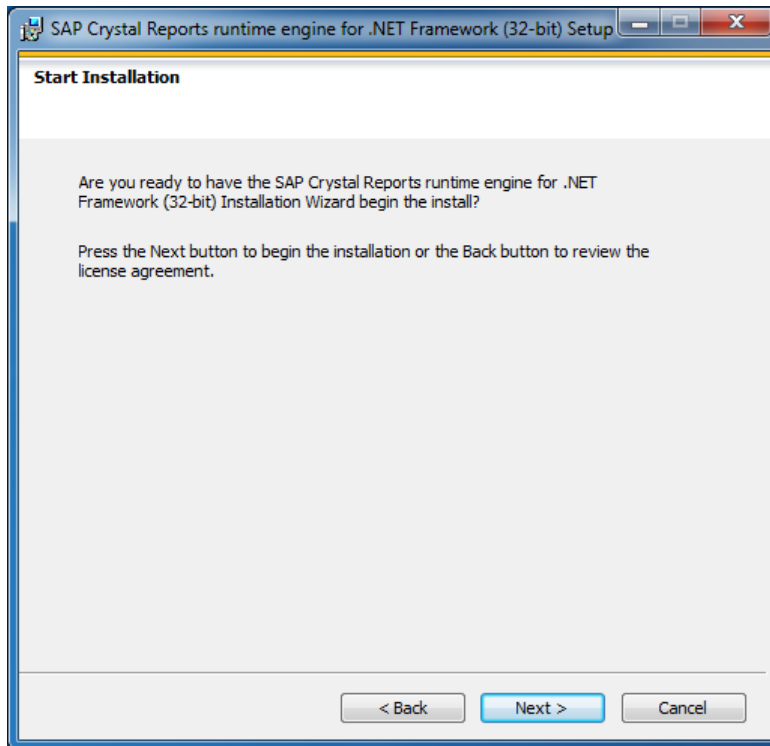
15. Click Next on the initial setup screen.



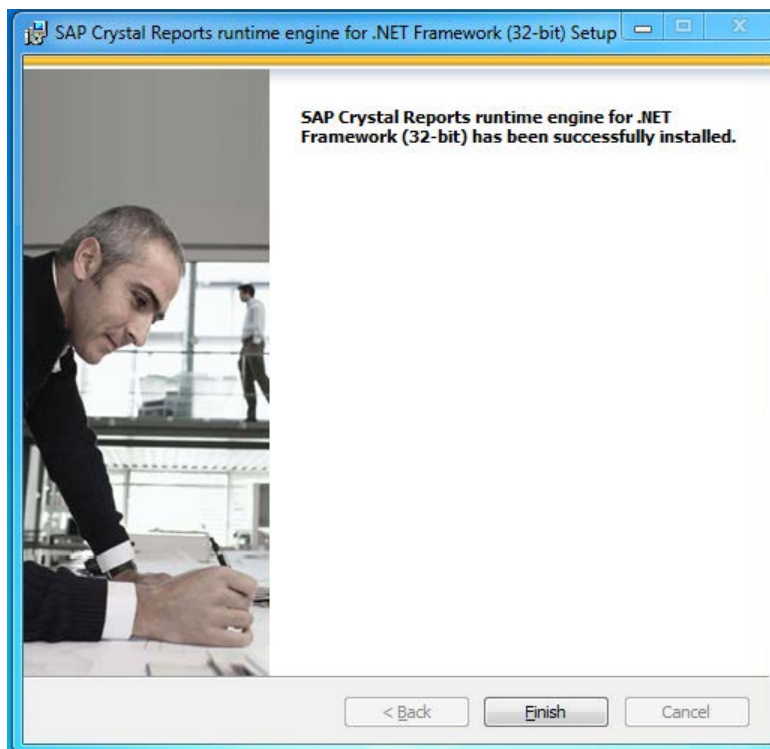
16. Click "I accept the License Agreement" then click Next.



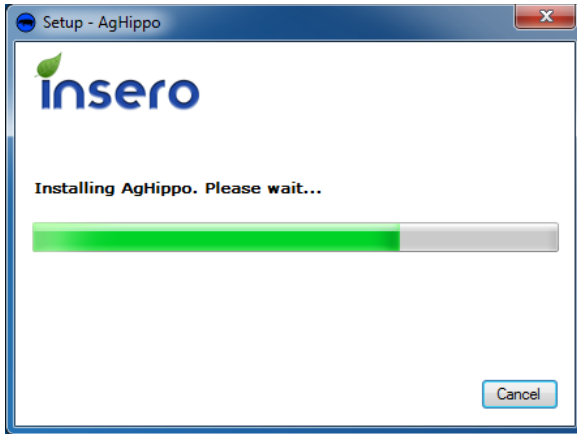
17. Click Next on the Start Installation screen. Several files will install at this point.



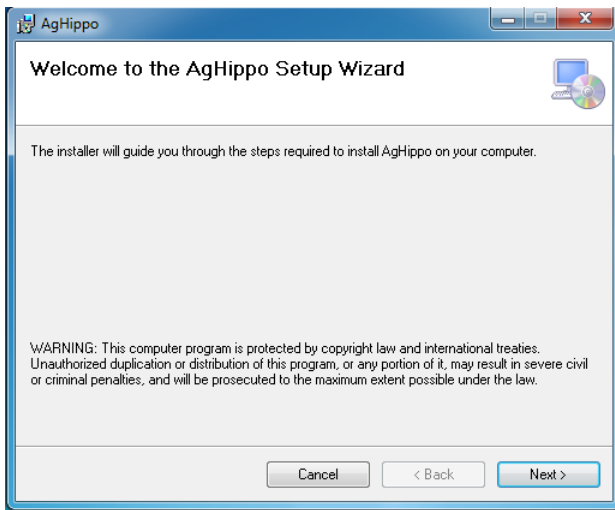
18. After the files have been installed, click Finish to complete the Crystal Reports installation.



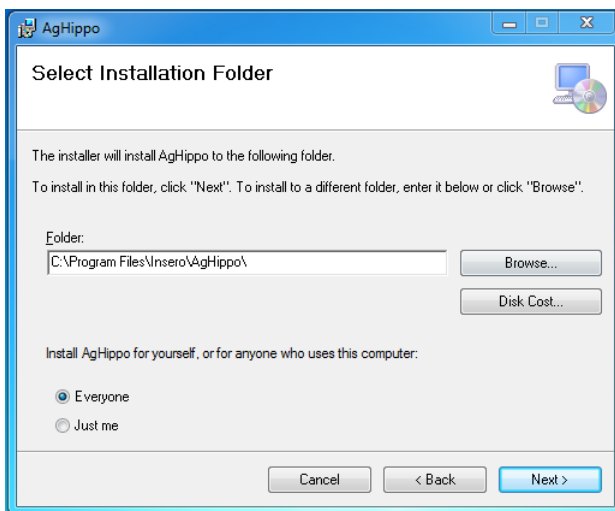
19. AgHippo is the third component that will install.



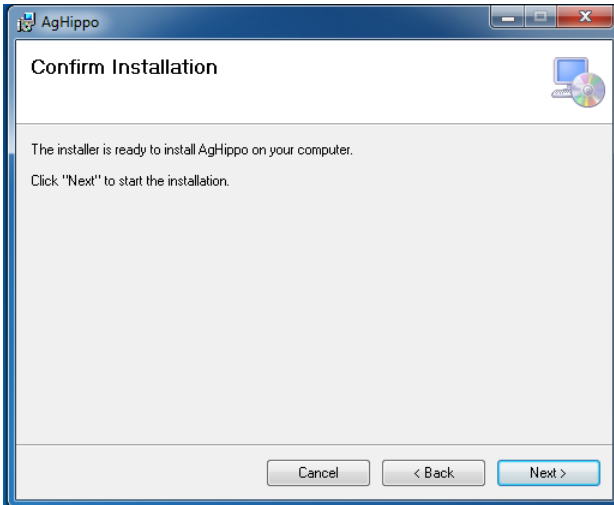
20. Click Next on the Setup Wizard screen.



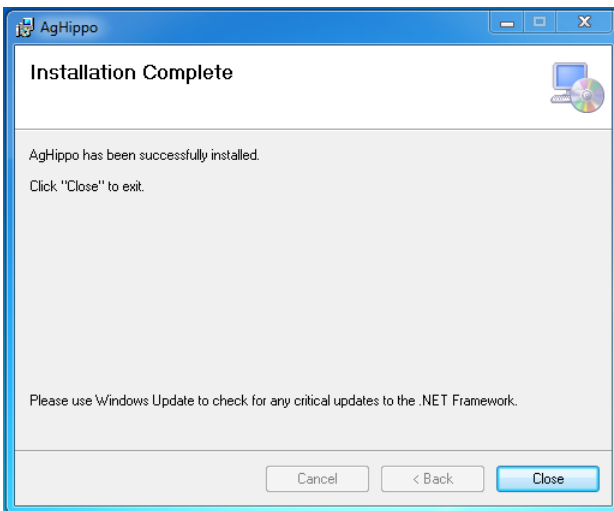
21. Install AgHippo in the recommended folder and click Next.



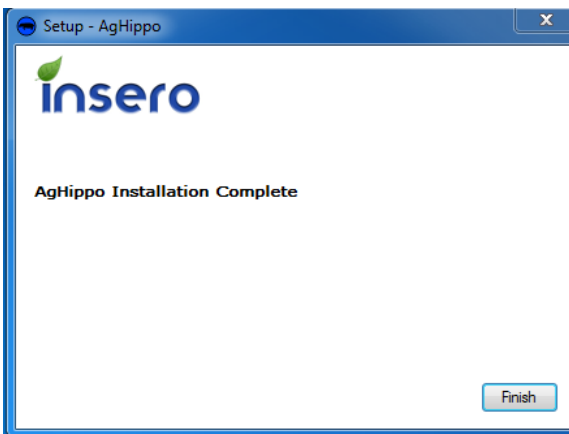
22. Click Next again on the Confirm Installation screen.



23. Once AgHippo has finished installing, click Close on the Installation Complete window.



24. Click Finish on the Inero logo window.



The entire software package installation is now complete.

II. Retrieving Logs

1. Allow 15 seconds for the AgOtter to complete its power up cycle, then on your Apple device, go to Settings -> Wi-Fi. (See: Figure 1)

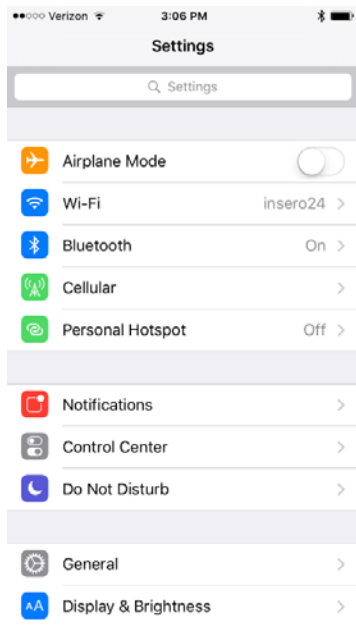


Figure 1: iOS Settings Screen

2. Choose the Wi-Fi network that matches the serial number of the AgOtter controller and tap its name. (in this example, AgOtter 108) Once you're connected, a check mark will appear next to the Wi-Fi network. (See: Figure 2, Figure 3)

Important Note: You will not have internet connectivity while connected to the AgOtter Wi-Fi.



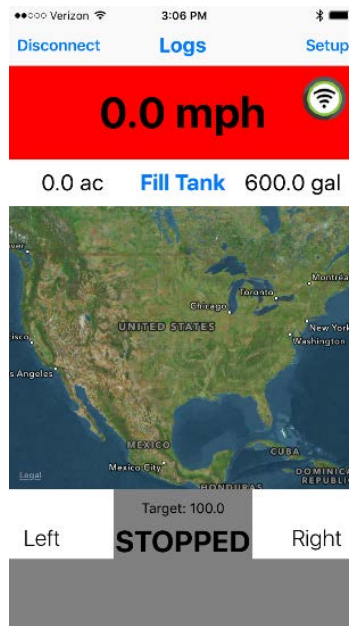
Figure 2: Connected to Normal Wi-Fi



Figure 3: Connected to AgOtter Wi-Fi

3. Open the AgOtter app and connect to the AgOtter controller. Once connected, the home screen will show a WiFi symbol. If it connects correctly it should be highlighted green.

Important Note: If the WiFi logo is red or missing, there is a problem with the WiFi connection. Refer to Appendix C: General Troubleshooting.



Wi-Fi Connected

4. Tap on the Logs menu to view logs available for download.

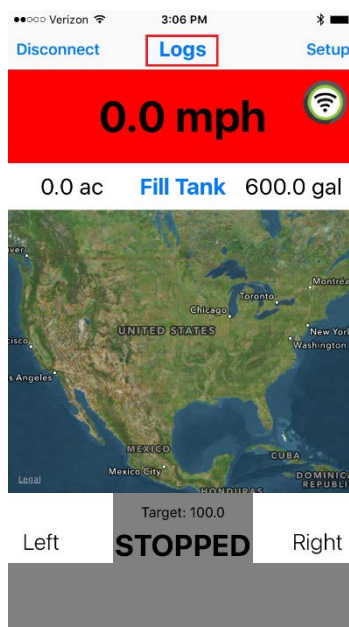
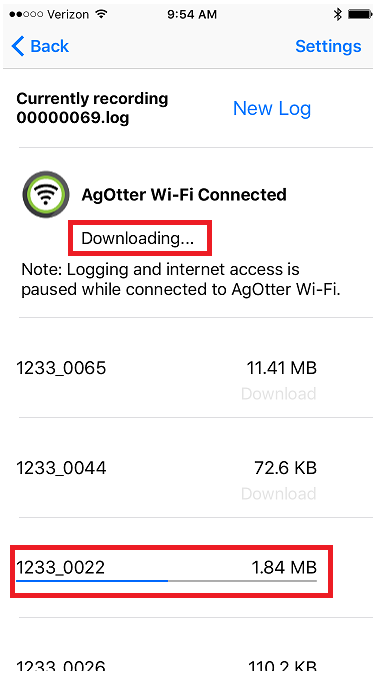
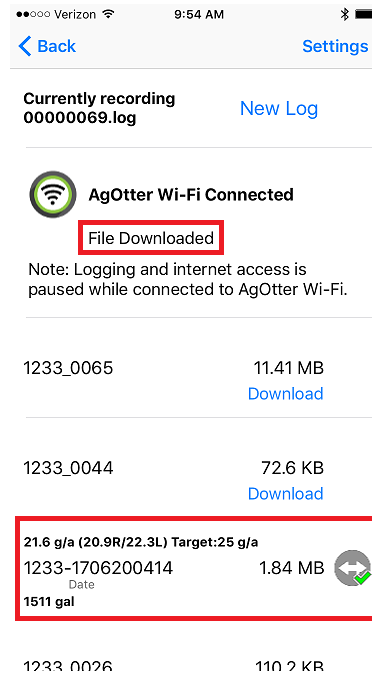


Figure 4: Logs Menu

5. Tap on the log file you want to download. The log file will start transferring, and when finished will have a Checkmark icon next to it.



Log File Downloading



Log File Download Complete

6. Disconnect from the AgOtter Wi-Fi by either connecting to another Wi-Fi network (See: Figures 1, 2, 3) or tap the Wi-Fi slider button off. (See: Figure 5)

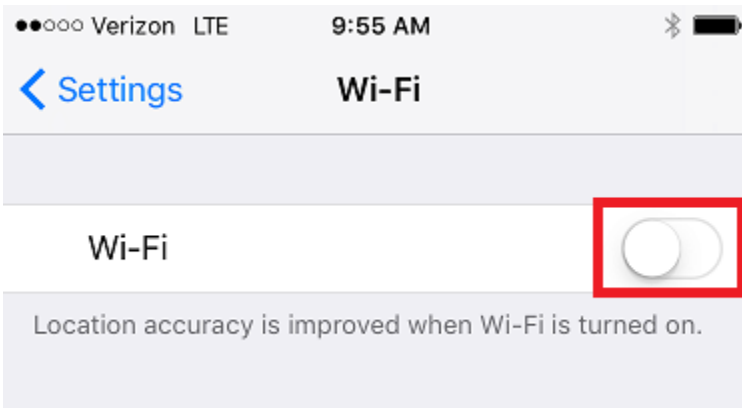
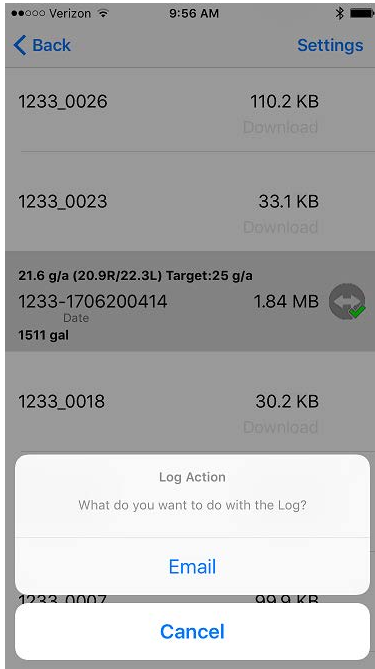


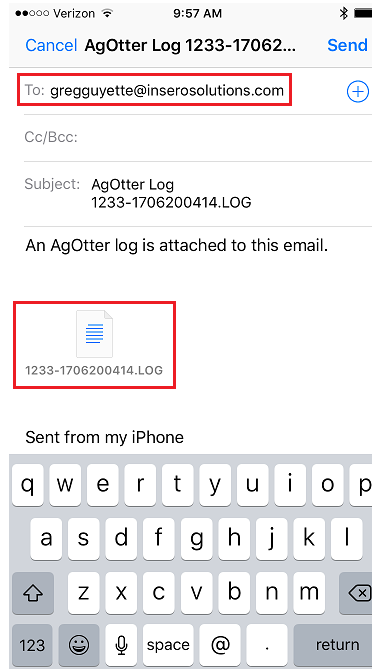
Figure 5: Wi-Fi slider OFF

Important Note: You will have to disconnect from the AgOtter Wi-Fi to re-enable internet access to be able to e-mail log files.

7. Reconnect to the AgOtter app and go to the Logs menu. (See: Figure 4) Tap on a downloaded log file and the Mail app will come up with the log attached to a mail message. Enter an e-mail address and press send to e-mail the log.



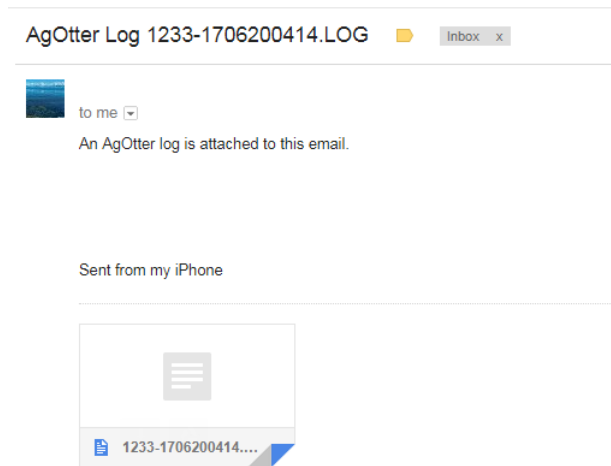
Select Log to E-Mail



E-Mail Log via Mail app

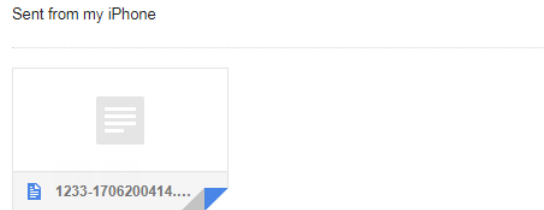
Important Note: The Mail app will need to be configured with an e-mail account before you're able to send logs. See Appendix B: Setting up Apple Device

- On your PC with AgHippo installed, download the .LOG files via your e-mail client and save them to your AgHippo Logs folder. (Default location is C:\AgHippo\Logs)



An AgOtter log is attached to this email.

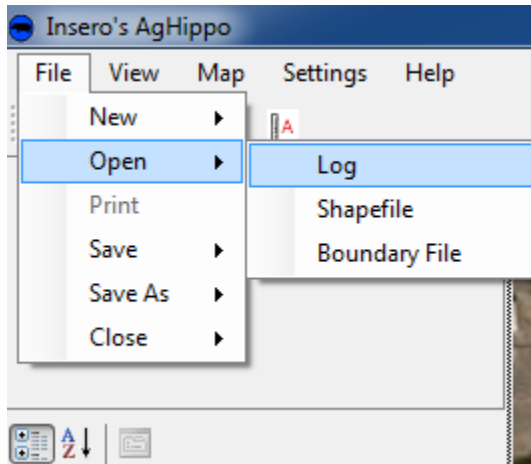
E-Mail log attachment via Outlook



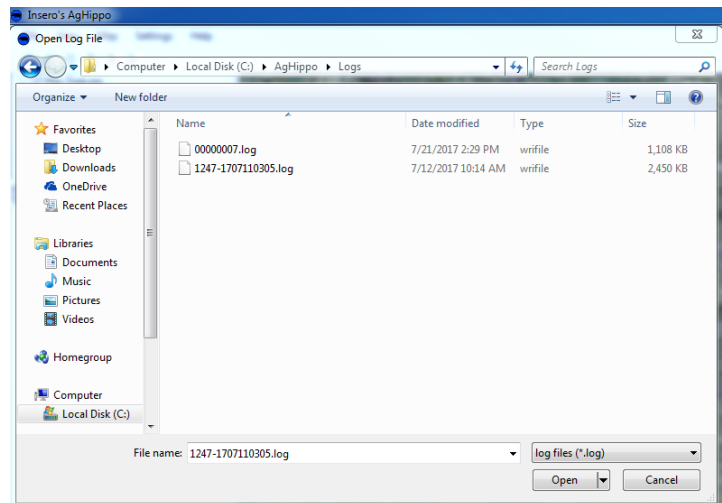
E-Mail log attachment via Gmail

III. AgHippo Operation

1. Open a log file by going to File -> Open -> Log, then select a log file to open. (Default location is C:\AgHippo\Logs)



Open Log File



Select Log File to Open

Important Note: Larger log files will take some time to load.

2. The highlighted tools in Figure 5 are the most commonly used functions: Zoom In, Zoom Out, Pan, Selection.

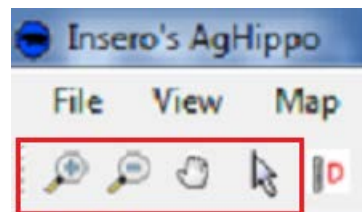


Figure 5: Zoom In, Zoom Out, Pan, Selection

- i. Zoom In / Zoom Out - To zoom in on a portion of a field, click the Zoom In icon. (magnifying glass with plus icon) Your mouse icon will change to a magnifying glass with plus icon. Click on the part of the field you want to zoom in on. To zoom out on a portion of the field, click the Zoom Out icon. (magnifying glass with minus icon) Your mouse icon will change to a magnifying glass with minus icon. Click on the part of the field you want to zoom out on.

Important Note: The Zoom tool is helpful for boxing off a specific part of a field to analyze.

- ii. Panning - To reposition the map, select the Pan icon. (hand icon) Your mouse icon will change to an icon with four arrows. Hold the left click button on the mouse while moving the mouse to drag the map around to a different location.
- iii. Selection – To view specific path points on the map, select the Selection icon. (normal mouse icon) Your mouse icon will change into an icon with a pointing finger. Hover the icon over a specific point on the map to get detailed information about that point.

3. Paths and Swaths – Paths and Swaths can be toggled on or off to show each separately or together. (See: Figure 6) They are drawn on the map in one second intervals. The selection boxes are in the upper left portion of AgHippo.

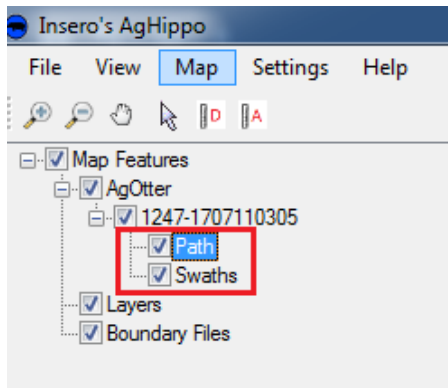
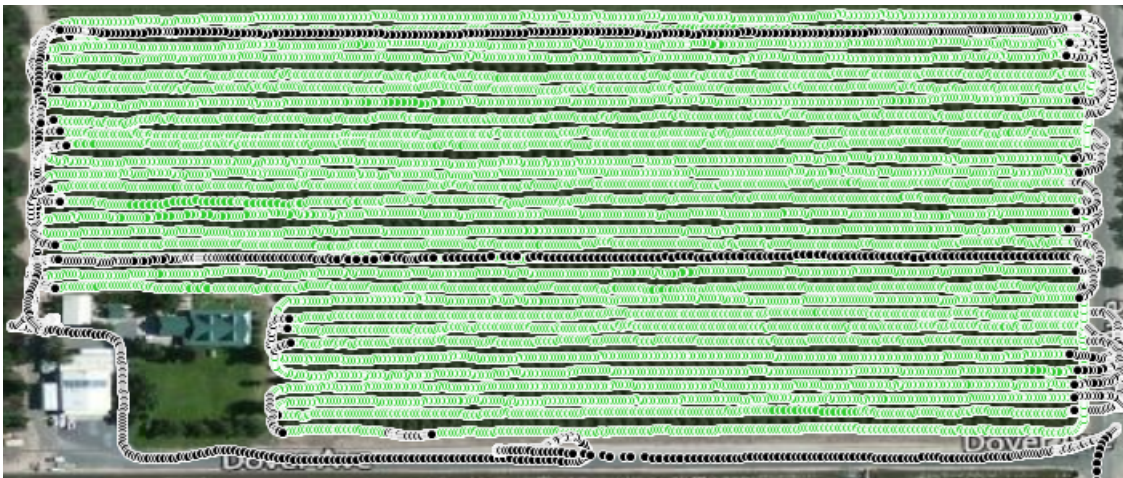


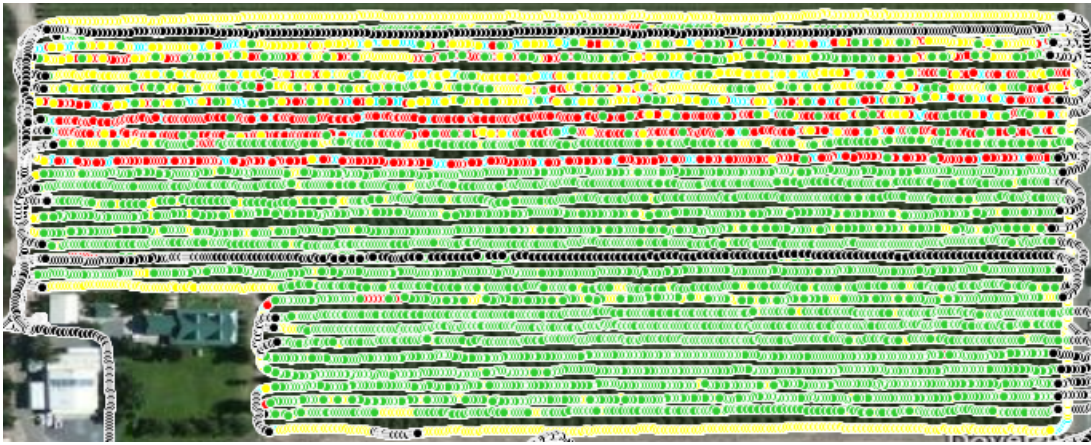
Figure 6: Path and Swath selection

4. Paths – Paths are points that show the path in which the sprayer is moving.



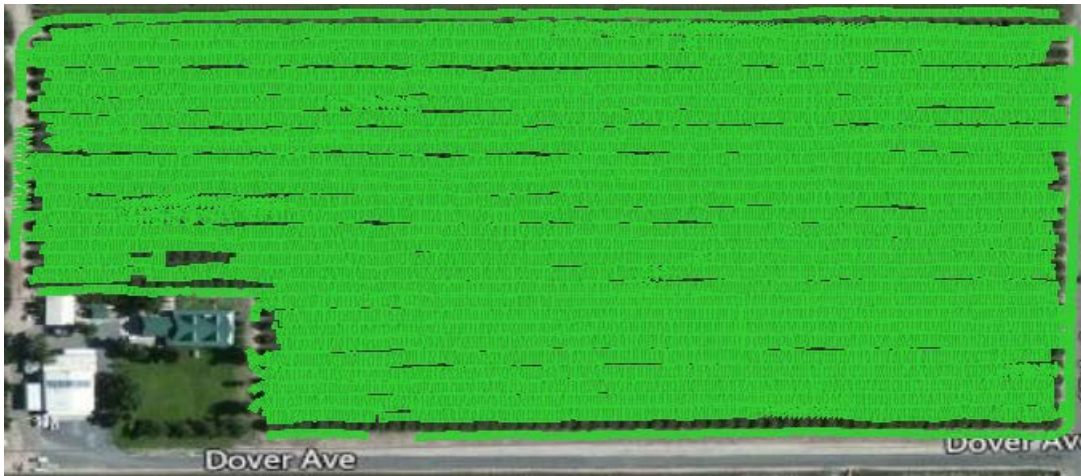
Path Only Selection

5. Path Color Coding – Different colors represent different statuses along the sprayer's path.
 - i. Black – No Flow/Spray
 - ii. Green – Rate or Speed is within target parameters
 - iii. Yellow – Rate or Speed is outside (below) target parameters
 - iv. Red – Rate or Speed is outside (above) target parameters
 - v. Blue – With 2 Meter systems, Rate is outside target parameters (one side is too high and the other side is too low)

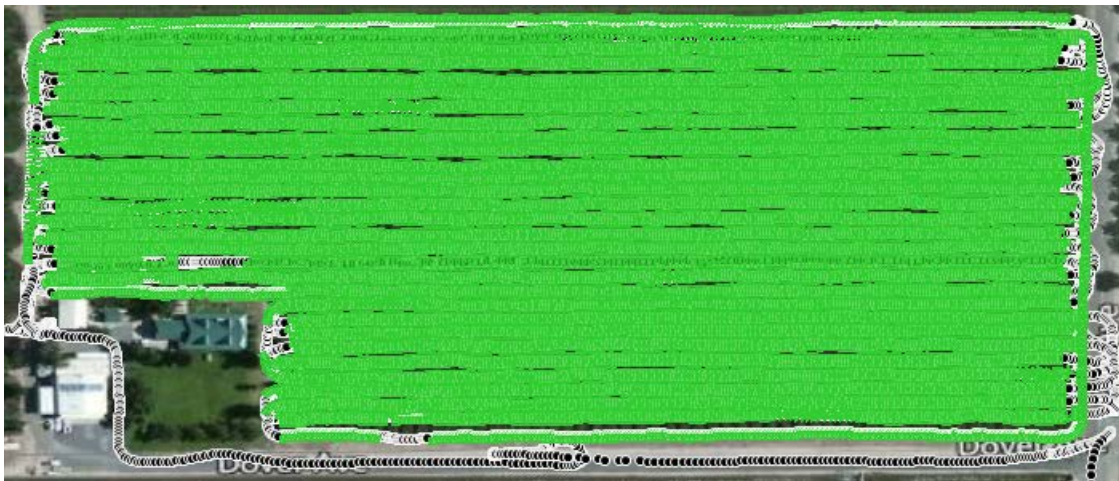


Example of Path Color Coding

6. Swaths – Swaths show areas where spray has been applied. The width of the area on the screen is equal to the swath width that is set for that particular log in the AgOtter app. Swaths will always be green.



Swath Only Selection



Path and Swath Selection

- Data Review – On the left side in the AgHippo software, there is a section to review the spray data for a log file. This is broken down into two main categories: Summary and Track Detail. You can also change your view options for Speed or Flow based on the Alerts you've specified. (AlertViewOptions)
- Summary – This displays the overall data for the open log file.

Summary	
Alerts	Info
AlertViewOptions	Min/Max Speed
Amount	1680.6 G
Area Treated	17.2 Acres
AvgAppRate	98.5
AvgFlowRate	9.6
AvgSpraySpeed	2.4
Chemical	
Driver	
Duration	05:28:29
Field	
JobName	
MachineName	
Other	
SerialNumber	0
Start	01/29/2016 19:26:03.000
TargetRate	100.0 GPA
TimeSprayed	02:54:18
Title	AgOtter Log Summary

Log Summary

- Track Detail – This displays second to second data for selected points in the log file.

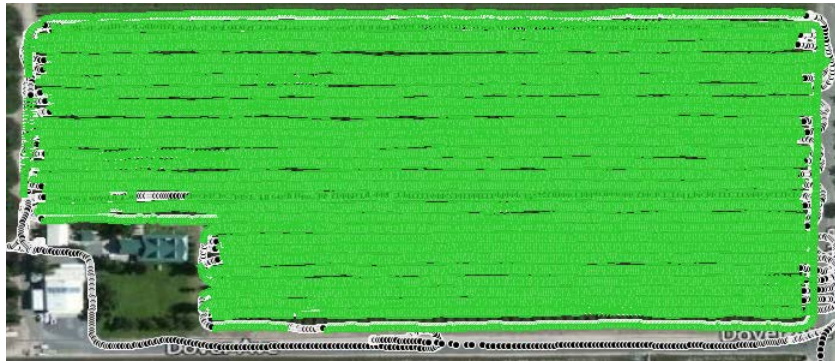
Track Detail	
AppRate	100.0 GPA
Heading	270°
Latitude	36.41678
Longitude	-119.67485
Speed	2.5 mph
Spray_Left	106.8 GPA
Spray_Right	97.1 GPA
SprayStatus	ON
Swath	21.8 ft
Time	01/29/2016 22:06:05

Track Detail

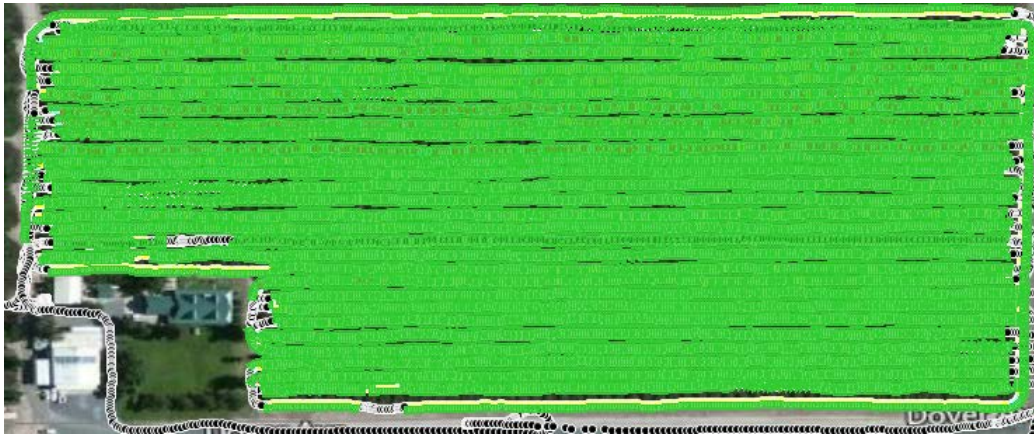
- AlertViewOptions – Path color coding will change based on the option selected. (Min/Max Speed, Min/Max Flow, No Alerts) You can also change your Alert Settings in this menu.

AlertViewOptions	Min/Max Speed
Amount	Min/Max Speed
Area Treated	Min/Max Flow
AvgAppRate	No Alerts
AvgFlowRate	Change Settings

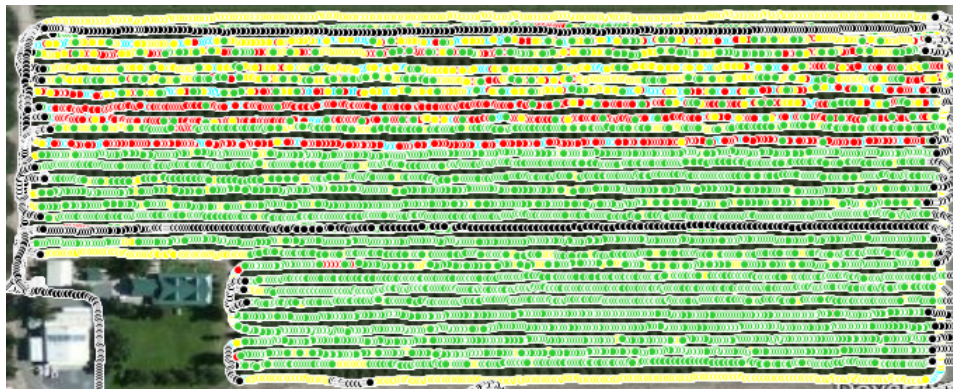
AlertViewOptions



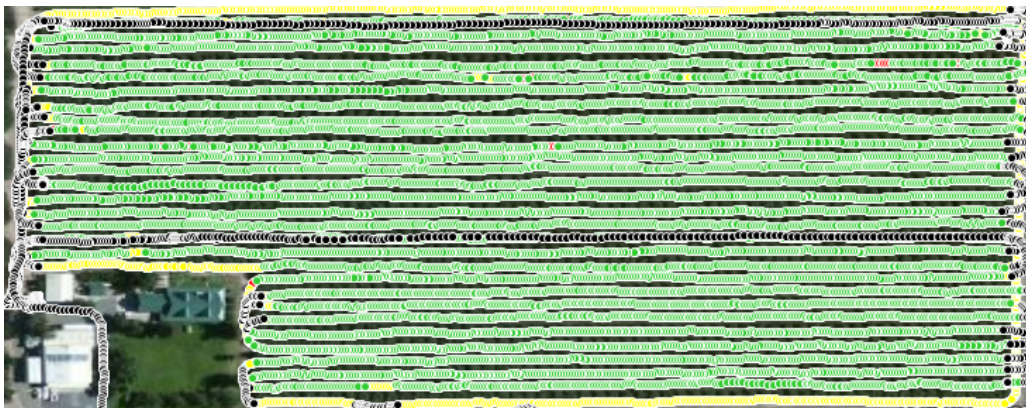
Alert View Option: Min/Max Speed



Alert View Option: Min/Max Flow (10%) (Swath Enabled)

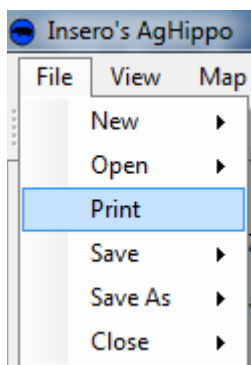


Alert View Options: Min/Max Flow (Over/Under Flow @ 10%) (Swath Disabled)



Alert View Options: (Over/Under Flow @ 20%) (Swath Disabled)

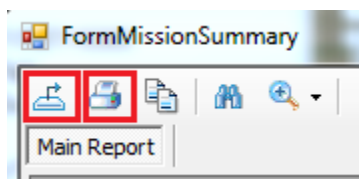
11. Printing – A printable summary report can be generated by going to File -> Print.



Print Menu

Important Note: It may take some time for this to generate based on the size of the log file

12. The report that is generated will display pertinent information about the job, a map of the area sprayed, and a legend showing the different alarms with the associated color codes. This summary can be printed (second icon with a printer) and/or saved as multiple document formats for later use. (first icon with a box and arrow)



Crystal Reports Icons

AgOtter Log Summary

Filename:	00000007	Product:	
Date:	01/29/16	Amount Applied:	1680.6 G
Start Time	19:26:03	Avg Flow Rate:	9.6 GPM
Duration:	05:28:29	App Rate - Left:	105.6 GPA
Spray Time:	02:54:18	App Rate - Right:	92.1 GPA
Machine:		App Rate - Both:	98.5 GPA
Serial Number:	0	Avg Spray Speed:	2.4 MPH
Driver:		Area:	17.2 Acres
Job Name:		Other:	
Field:			



No Alarms	Speed Alarms	Flow Alarms
● Spray On	● Spray On	● Spray On
● Spray Off	● Spray Off	● Spray Off
	● Over Speed	● Over Flow
	● Under Speed	● Under Flow
		● Over/Under

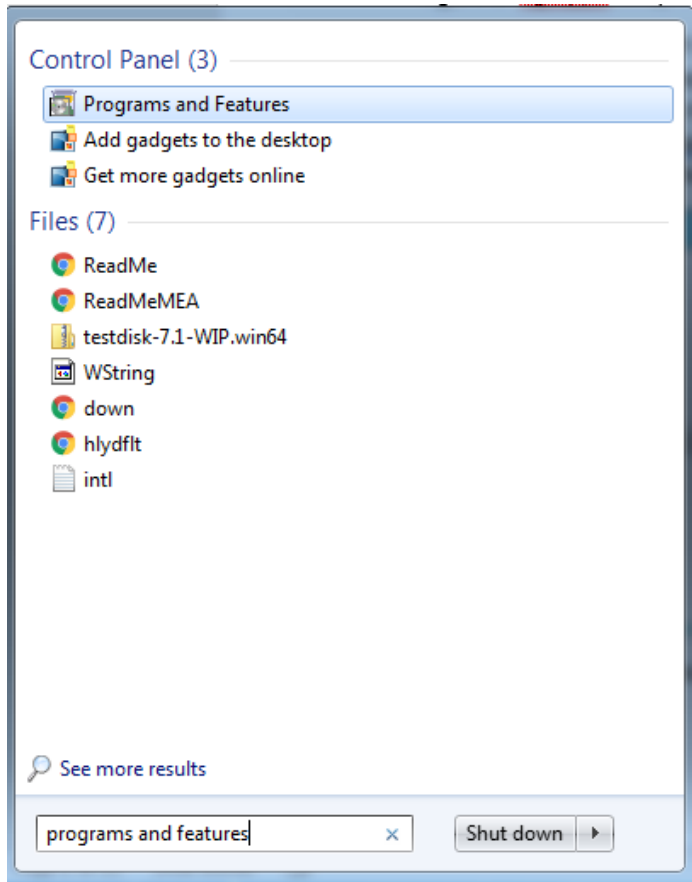
Map Legend

Alarm Type: Change Settings
 Target: 100.0 GPA

Appendix A: AgHippo Uninstallation

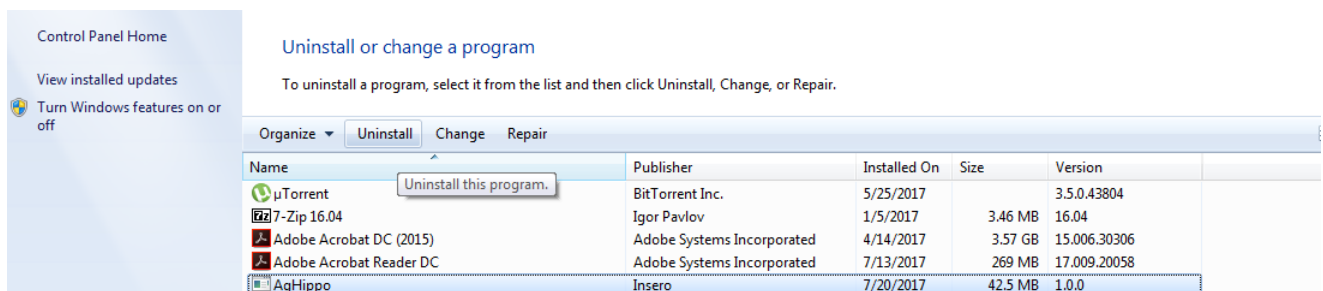
If you have a previous version of AgHippo installed, it will need to be uninstalled before installing the most current version. The following steps show the uninstallation process.

1. Click the Windows button, type Programs and Features, then press Enter. (Screenshots taken from Windows 7, will appear differently on Windows 10.)



Programs and Features

2. Locate AgHippo in the list, click on it, then click Uninstall above. The AgHippo program will be removed.



Uninstall AgHippo

3. Refer back to Section I., Step #3 to continue the installation process.

Appendix B: Setting Up Apple Device

To ensure that you receive AgOtter app updates and have the ability to e-mail logs, you will need to set up your Apple ID and E-Mail accounts on your Apple device.

I. Update your Apple ID

An Apple ID is required to update the App. We delete our AgOtter Apple ID from the iPad upon shipment of the AgOtter so that our account is not left on the iPad when you receive it. This means you need to set up your own Apple ID for your iPad(s). You can use the same Apple ID for all iPads if you so choose.

To setup your Apple ID:

1. In the Settings app, go into menu item "iTunes & App Store"
2. Press "Sign In"
3. Enter your Apple ID credentials
OR
Create an Apple ID (go to iTunes Store, scroll to the bottom, press Sign In and then Create New Account)

II. Update your iPad e-mail

An e-mail is required to send logs from any Apple device. We delete our AgOtter e-mail account upon shipment of the AgOtter so that it is not mixed up with your data. This means that you need to assign an e-mail account to the iPad. We suggest that you create a new e-mail account that is dedicated for AgOtter logs, but you can use any existing e-mail account. Just keep in mind that this iPad will have access to that e-mail account. You can use the same e-mail for all Apple iPads.

To setup your e-mail on your Apple device:

1. In the Settings app, go into menu item "Mail".
2. Press "Accounts"
3. Choose your e-mail provider to enter login credentials
OR
Create a new e-mail account dedicated to AgOtter logs. (e.g. for Gmail, go to www.google.com and press Gmail in the upper right corner (right click your ID and Sign Out if you are already logged into a different account))

Appendix C: General Troubleshooting

I. WiFi troubleshooting



If the icon has a red line through it as shown  one of four things may be the cause:

1. You did not connect to the AgOtter Wi-Fi in Settings -> Wi-Fi
2. You connected to the Wi-Fi of a different AgOtter
3. You are out of range of the AgOtter
4. Your iOS may have automatically switched back to your internet router